

2025 K4 GT-LINE TURBO

MODEL/OPT.CODE: 26452 / 017
 EXTERIOR COLOR: SNOW WHITE PEARL
 INTERIOR COLOR: BLACK
 VEHICLE ID NUMBER: 3KPFW4DC9SE233261
 PORT OF ENTRY: LAREDO, TEXAS

Sold To: TX032
 World Car Kia
 8034 IH-35 SOUTH
 SAN ANTONIO TX 78224

Ship To: TX032



STANDARD FEATURES

STANDARD GT-LINE FEATURES

MECHANICAL
 2.0L Multi-Point Fuel Injection (MPI) 4-Cyl Engine
 Intelligent Variable Automatic Transmission
 Sport-Tuned Multi-Link Rear Suspension

ADVANCED DRIVER-ASSISTANCE SYSTEMS
 Forward Collision-Avoidance Assist - Cyclist/Jct Turning
 Lane Keeping Assist & Lane Following Assist
 Driver Attention Warning & High Beam Assist
 Blind-Spot Collision-Avoidance Assist
 Rear Cross-Traffic Collision-Avoidance Assist
 Safe Exit Warning & Highway Driving Assist
 Navigation-Based Smart Cruise Control w/Stop & Go

SAFETY

Dual Front Advanced Airbags
 Front and Rear Seat-Mounted Side Airbags
 Front and Rear Side Curtain Airbags

INTERIOR, COMFORT & CONVENIENCE

12.3" Touchscreen Display w/Navigation
 Wireless Android Auto & Apple CarPlay
 Kia Connect w/Comp 3-Yr Ultimate.* Where Available**
 SIRIUSXM® w/Free 3-Mo. Subscription*
 12.3" Instrument Display
 Smart Key w/ Push Button & Remote Start
 Smart Trunk (Open)
 USB Multimedia Port, Front & Rear USB Charge Ports
 Wireless Phone Charger
 Dual-Zone Auto Climate Control w/ 5" Control Display
 Cloth & SynTex Seating Material
 Power Driver's Seat w/ Power Lumbar
 Heated Front Seats
 GT-Line Sport Steering Wheel w/Paddle Shifters
 Rear Occupant Alert

EXTERIOR

18" Alloy Wheels
 GT-Line Styling w/Gloss Black Exterior Accents
 LED Reflector Headlights w/Auto-On/Off & Amber LED DRLs
 Heated Outside Mirrors w/ LED Turn Signals
 Compact Spare Tire

WARRANTY

10 Year/100,000 Mile Limited Powertrain Warranty
 5 Year/60,000 Mile Limited Basic Warranty
 5 Year/60,000 Mile Roadside Assistance

*Additional terms and conditions apply.
 **Kia Connect may be currently unavailable for some Model Year 2022 and newer vehicles sold or purchased in Massachusetts; please see owners.kia.com for more information.
 NOTE: When you purchase this vehicle, Kia America, Inc. collects personal information you provide to the dealership. For information on our collection and use of personal information and your rights, please see our Privacy Policy on www.kia.com.

MANUFACTURER'S SUGGESTED RETAIL PRICE ▶

\$ 28,090.00

COMPARE GT-LINE TURBO FEATURES

Added to/in place of standard GT-Line features

- 1.6L Turbocharged GDI 4-Cylinder Engine
- 8-Speed Automatic Transmission
- Power Sunroof with Sunshade
- LED Projector Headlights
- LED Fog Lights
- LED Rear Combination Lights
- SynTex Seating Material
- Harman/Kardon Premium Audio System
- Alloy Sport Pedals
- Rear Air Vents

Included
 Included
 Included
 Included
 Included
 Included
 Included
 Included
 Included
 Included

ADDITIONAL INSTALLED EQUIPMENT:

- (In addition to or in place of standard features)
- Snow White Pearl Paint
 - GT-Line Red Interior Color Package
 - GT-Line Turbo Technology Package
 - Smartphone Digital Key* (Requires Kia Connect**)
 - Memory Driver's Seat & Outside Mirrors
 - Ventilated Front Seats
 - Parking Collision-Avoidance Assist - Reverse
 - Parking Distance Warning-Forward/Reverse/Side
 - Highway Driving Assist 2
 - Surround View Monitor
 - Blind-Spot View Monitor
 - Multi-Color LED Ambient Lighting

\$395.00
 \$295.00
 \$2,200.00

MSRP INCLUDING OPTIONS

\$ 30,980.00

INLAND FREIGHT AND HANDLING

\$ 1,195.00

TOTAL MANUFACTURER'S SUGGESTED RETAIL PRICE ▶

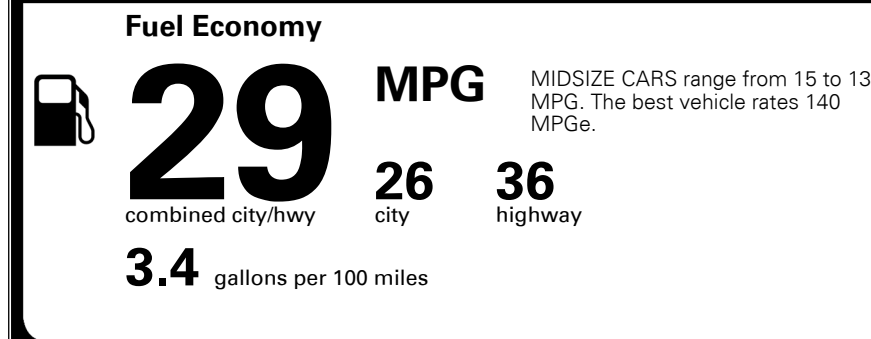
\$ 32,175.00

TOTAL ADDITIONAL WEIGHT:



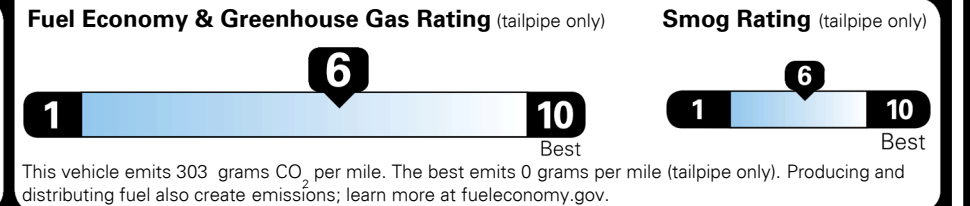
EPA DOT Fuel Economy and Environment

Gasoline Vehicle



You save \$500
 in fuel costs over 5 years compared to the average new vehicle.

Annual fuel cost \$1,800

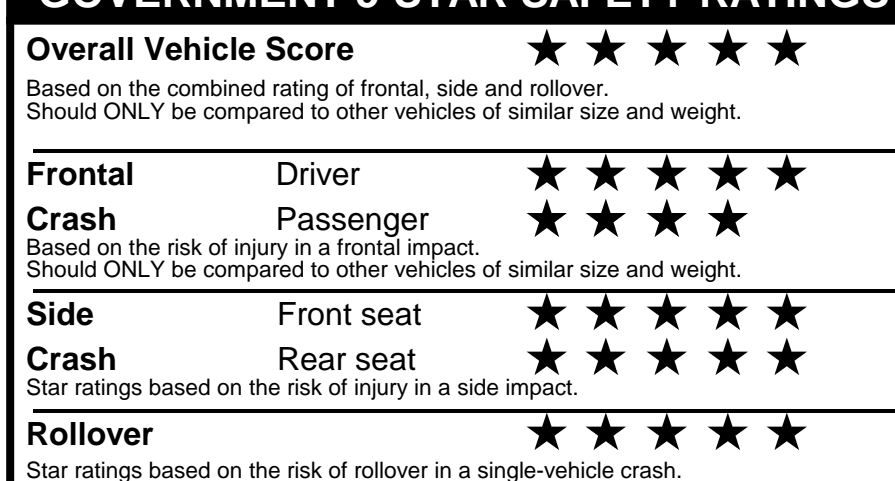


Actual results will vary for many reasons, including driving conditions and how you drive and maintain your vehicle. The average new vehicle gets 28 MPG and costs \$9,500 to fuel over 5 years. Cost estimates are based on 15,000 miles per year at \$ 3.50 per gallon. MPGe is miles per gasoline gallon equivalent. Vehicle emissions are a significant cause of climate change and smog.

fueleconomy.gov
 Calculate personalized estimates and compare vehicles

Smartphone QR Code

GOVERNMENT 5-STAR SAFETY RATINGS



Star ratings range from 1 to 5 stars (★★★★★) with 5 being the highest.
 Source: National Highway Traffic Safety Administration (NHTSA).
www.safercar.gov or 1-888-327-4236

Manufacturer's suggested retail price includes Manufacturer's recommended pre-delivery service. License and title fees, state and local taxes and other dealer installed options and accessories are not included in the manufacturer's suggested retail price.

PARTS CONTENT INFORMATION

FOR VEHICLES IN THIS CAR LINE U.S./CANADIAN PARTS CONTENT: 20 %

MAJOR SOURCES OF FOREIGN PARTS:
 KOREA: 45%
 MEXICO: 35%

NOTE: PARTS CONTENT DOES NOT INCLUDE FINAL ASSEMBLY, DISTRIBUTION, OR OTHER NON-PARTS COSTS.

FOR THIS VEHICLE FINAL ASSEMBLY POINT: PESQUERIA, NL, MEXICO

COUNTRY OF ORIGIN ENGINE (MOTOR): USA
TRANSMISSION: KOREA